

MHD

MAINE HOME + DESIGN

THE INTERIOR DESIGN ISSUE

PAUL DESIGNS PROJECT
UPDATES AN 1840s
TOWNHOUSE IN
PORTLAND'S EAST END

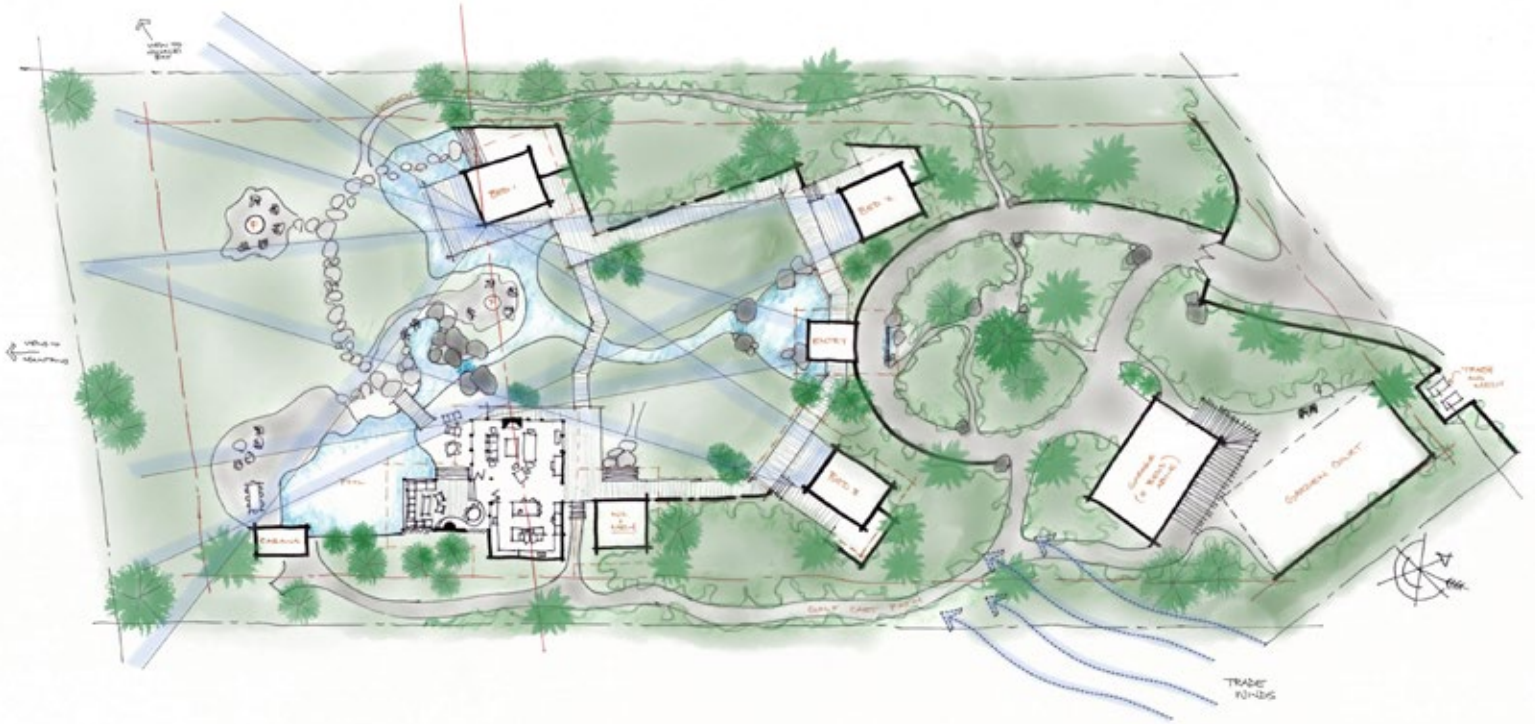
JANUARY // FEBRUARY 2024

\$8.95 US



+ FOREVER AFTER
A RELAXED RETREAT
CELEBRATES CASCO BAY

FROM MAINE TO HAWAII



Location: Kauai County, Hawaii
Architects: Alex Lehnen & Will Winkelman, Winkelman Architecture
Landscape Architect: Todd Richardson, Richardson & Associates
Construction Start: Spring 2024
Construction Complete: Spring 2026

Richardson and Lehnen sketch rough schematics (left) on their first visit to the site. On their third visit (right), stakes were laid out to represent the buildings and their respective floor heights.

Set high along the northern ridge of Hanalei Valley, where the river enters the bay, this modestly sized lot posed contending opportunities and challenges. It is part of a high-end subdivision on Kauai's North Shore. The client's desire to create a private oasis while also capturing the broad site views led to this novel approach for laying out a single-family program. Since neighboring homes tightly hem in the lot, dividing up the living spaces into separate structures and distributing them in a U-shaped arrangement open toward the views creates a private basin, a secret garden framed by architecture and oriented toward Kauai's waterfall-striped mountains and the famous Hanalei Bay. The landscape design relies heavily on lush, indigenous plants

to fill out the negative spaces between buildings; the plan offers private spaces in the individual bedroom cabanas, each oriented to a specific mountain peak. Keeping the bedroom structures small encourages communal gathering in the main living space, which is situated to capture the site's broadest viewshed. This dispersed arrangement also allows the cooling breezes of the northeast trade winds to meander through the site and buildings, offering important, natural cooling. The gentle basin, created for and reinforced by the built architecture, is accentuated with freshwater streams and pools that reflect the views and provide the opportunity for a refreshing plunge, and the small waterfalls offer acoustical cover for unwanted noises of the world outside. **MH+D**